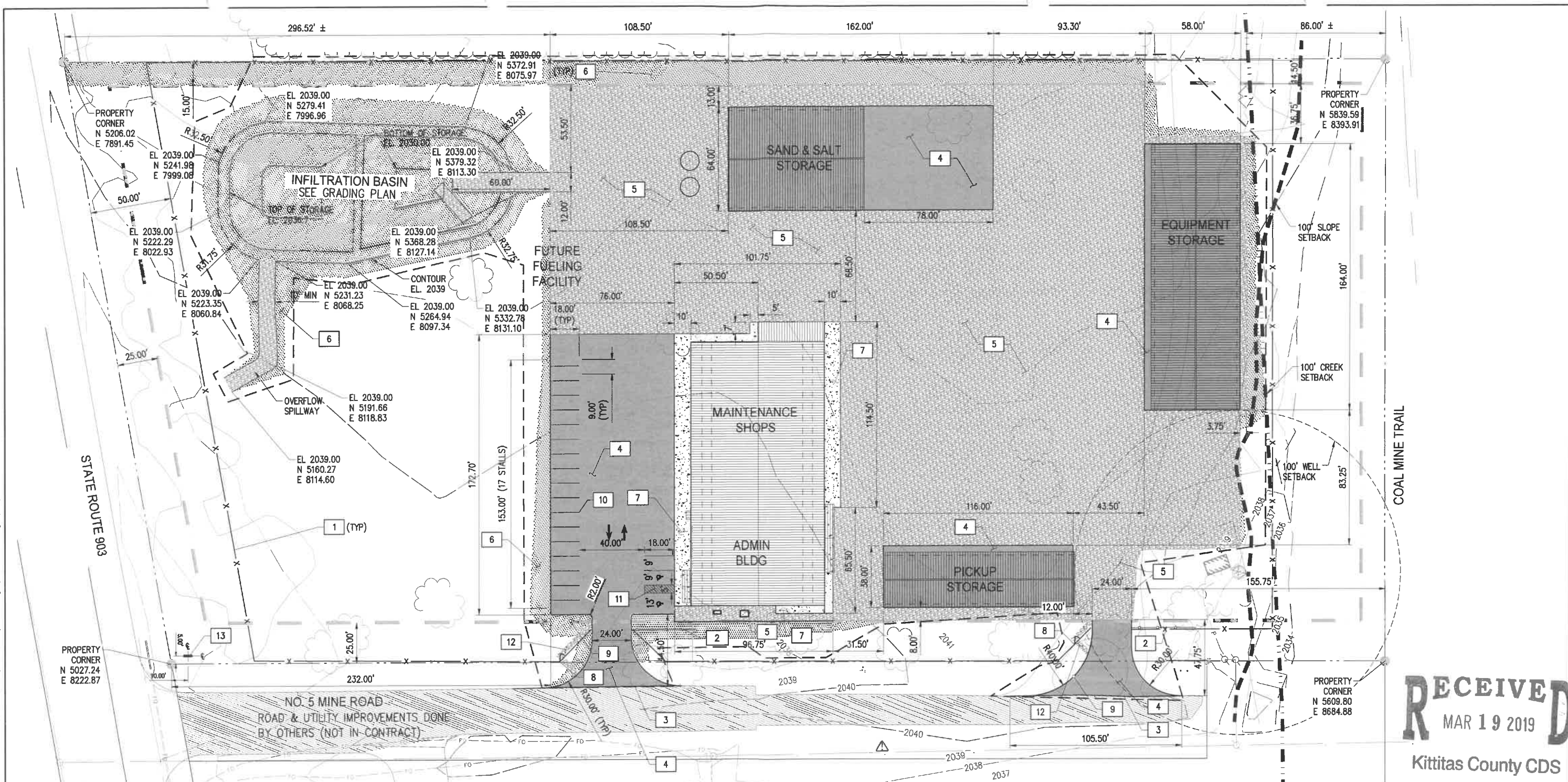


K:\PROJECTS\KITITAS CO\16144-2017 On-Call\10 #5 - UPPER COUNTY MAINT SHOP\2\_DESIGN\A\_Drawings\C0.10-SITE.dwg 9/20/2018 2:24 PM



**RECEIVED**  
MAR 19 2019  
Kittitas County CDS

**SITE NOTES**

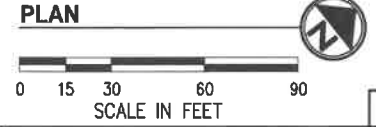
- 1 6' CHAIN LINK FENCE. FIELD ADJUST TO AVOID EXISTING TREES. LOCATE POSTS TO AVOID DAMAGE TO ROOTS.
- 2 6' X 24' WIDE CANTILEVER GATE WITH OPERATOR.
- 3 COORDINATE WITH FRONTAGE IMPROVEMENTS BY OTHERS
- 4 HMA PAVEMENT SECTION
- 5 GRAVEL SURFACING SECTION
- 6 LANDSCAPE AREA
- 7 CONCRETE SIDEWALK
- 8 36" WIDE PEDESTRIAN GATE
- 9 GATE ACCESS CONTROL PAD
- 10 PARKING STALL STRIPING
- 11 ADA VAN STALL STRIPING AND SIGNAGE
- 12 PEDESTRIAN ACCESS PATH, 36" WIDE, GRV
- 13 SIGN, SEE G1.04

**GENERAL NOTES**

- 1. SEE SITE DETAILS AND SECTIONS C0.15

**LEGEND**

- HMA
- GRAVEL
- LANDSCAPE
- CONCRETE
- LIMITS OF GRADING



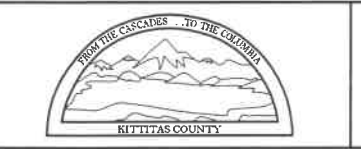
NO.	DATE	BY	APPR	REVISIONS

Approved By		FILENAME	DATE
ENGINEERING MANAGER	DATE	C0.10-SITE.dwg	8/18
DESIGNED BY	DATE	WRE	8/18
PROJECT MANAGER	DATE	WRE	8/18
DRAWN BY	DATE	BDH	8/18
PROJECT ENGINEER	DATE	CHECKED BY	DATE



**KPG**

**BID DOCUMENTS**  
9/12/2018



**KITTITAS COUNTY**  
**UPPER ROAD MAINTENANCE**  
**FACILITY REPLACEMENT**

**CIVIL**  
**SITE LAYOUT**

KPG PROJECT No. 16144W5 SHT 11 OF 105